

## ADERCO B2200 / BIO CONTROL ADDITIVE



Aderco B2200 is an organic and quickly biodegradable fuel additive specially formulated to eliminate and prevent bacteria, fungi and algae contamination in residual or distillate fuels. The product has been developed under rigorous Aderco quality standards combining high concentration, high efficiency and compatibility with other Aderco products.

### **ADERCO B2200 offers the following advantages:**

- Eliminate and prevent bacteria, algae and fungi contamination
- Large range of microbial control (including sulphate reducing bacteria)
- Biomass prevention and breakdown properties (improved filterability)
- Preventive and curative dosages depending on severity of contamination
- Reduces likelihood of unexpected stoppage
- Protection in the event of problematic fuel
- Protects surfaces against corrosion
- Avoid unnecessary stress and wastage

**ADERCO B2200**



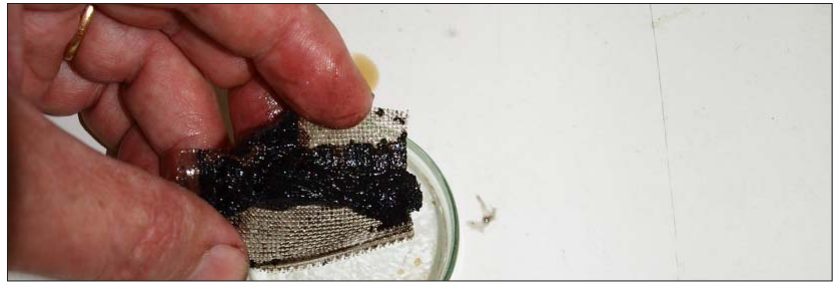
### **ADERCO B2200 has the following features and properties**

- 100% organic
- Rapidly and completely biodegradable
- Anti-corrosive properties
- Immediate anti-bacterial and anti-biomass effect
- Solubility in both water and fuel
- Ashless, metal free
- 100% compatible with other Aderco products

## Fuel Contamination

This problem is most likely to occur when water accumulates in the fuel system, primarily the fuel tanks. The microorganisms live in the fuel/water interface and feed off dissolved oxygen and nutrients in the fuel. Under ideal conditions such as high temperatures, high humidity and turbulence, they are able to proliferate exponentially and create an acidic bio-sludge that can accumulate in the tanks and eventually cause problems such as: filter blockage, injection system blockage, fuel pump blockage, corrosion and eventually complete engine failure if the problem is not controlled.

Engines can function with a surprisingly high amount of microbial growth in the fuel before an actual engine failure occurs. But symptoms such as poor starting, fuel starvation, erratic running and black smoke indicate that there might be a contamination problem. At this point it is necessary to kill the bacteria and possibly clean the tanks before the problem becomes damageable for the engine. In any case, it is always better to prevent than to cure the problem.



## Application

Before adding Aderco B2200 to the fuel, drain water from the tanks as much as possible, this is the main cause of fuel contamination. If the contamination is severe, tanks should be cleaned and the fuel should be run through a filter to clean it as much as possible. If filtering the fuel is not an option, the curative dosage prescription should be used. This shock treatment will not only kill the microorganisms, but it will also break up and disperse the accumulated biomass so it can pass through the filter without generating extra stress.



(Head Office)  
**America**

### **ADERCO Inc.**

3080, boul. Le Carefour  
Suite 603  
Laval, (Québec) H7T 2R5  
CANADA  
Tel.: +1 450-988-4100  
Fax: +1 450-988-4110  
Email: [info@aderco.com](mailto:info@aderco.com)

(International Divisions)  
**Europe**

### **ADERCO Europe S.A.**

Chaussée de Louvain 275  
1410 Waterloo  
BELGIUM  
Tel.: +32 2 354.46.72  
Fax: +32 2 354.54.10  
Email: [info@adercosa.be](mailto:info@adercosa.be)

**South America**

### **ADERCO do Brasil**

Rua Conselheiro Zacarias, 344  
CEP 01429-020 - Jd. Paulista  
São Paulo - SP  
BRASIL  
Tel.: +55 11 3791 9096  
Fax: +55 11 3791 9097  
Email: [aderco@aderco.com.br](mailto:aderco@aderco.com.br)

**Asia**

### **ADERCO Asia**

Singapore Land tower  
37th floor, 50 Raffles Place  
Singapore 048623  
SINGAPORE  
Tel.: +65 6829-7059  
Fax: +65 6829-7070  
Email: [info@adercoasia.com](mailto:info@adercoasia.com)